

March 2, 2012

Design of Open space



My name is Eisuke Otsuka

Landscape architect in Sapporo

I appreciate having obtained the opportunity of talk.
It is said that we consider the design of Open space
(Park, Residential section, etc)



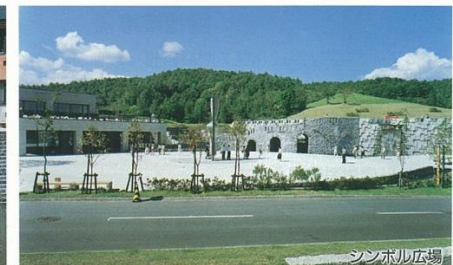
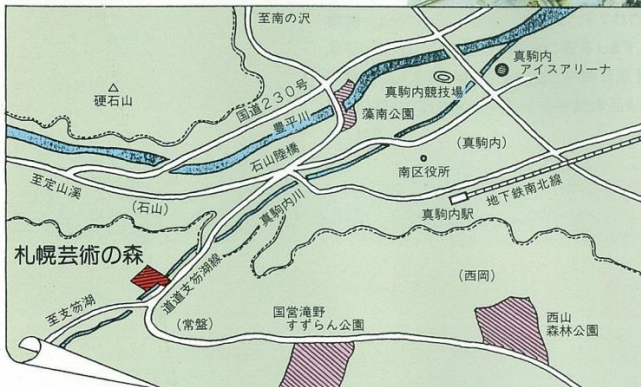
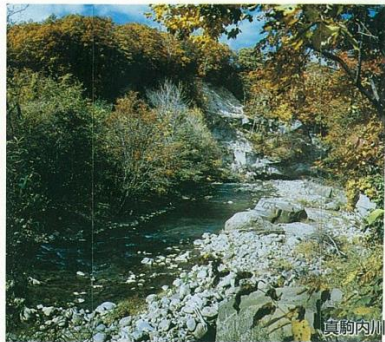
The topography is analyzed first.

- The hill of a good view and the land which has change in topography are suitable for improving an good park.
- However, topography restrains use of land.
- If the facilities where area is large is improved by a sloping ground, topography will be changed greatly.
- A road also becomes a steep slope.
- In order to employ the feature of the land efficiently, consider carefully harmony with the topography which plans the kind of activity, and arrangement of facilities.

Vegetation is valued like topography.

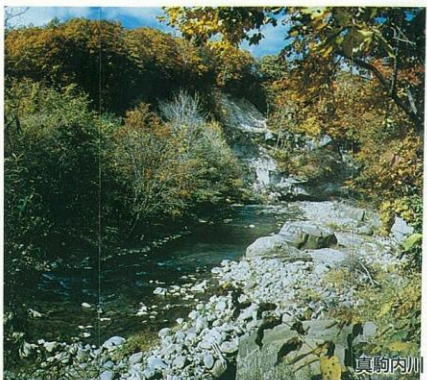
- A wood is important environmental protection equipment. The vigor of a storm or snowstorm is eased. Erosion by rain is controlled. CO₂ is absorbed. Temperature is stabilized.
- A tree is important equipment in order to maintain a comfortable living environment. The shade of a tree is a very comfortable place on a hot day. A flower and the autumnal leaves of autumn make a town beautiful. A big tree serves as a landmark.
- Wooden growth takes time. Therefore, trees (wood) are precious resources. As for a big tree and wood, preserving is desirable.

The view of land use of having thought preservation of topography and a tree (wood) as important is introduced with an example.





芸術の森入口

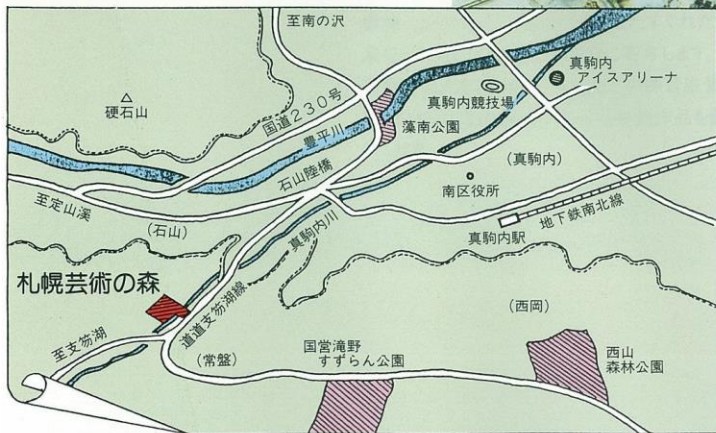


真駒内川

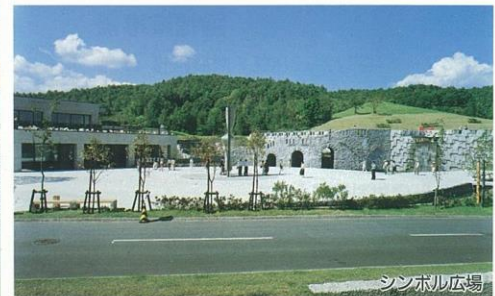


札幌芸術の森 計画位置

現在の札幌芸術の森



工芸の広場



シンボル広場

- This is a photograph of Sapporo art park.
- It is the park improved on the hill in the Sapporo-city.

■第1期計画 施設概要

施設名	施設の概要
昭和61年7月オープン施設 野外美術館	約3.5haの空間に現在活躍している作家の彫刻作品52点を展示
芸術の森センター	芸術の森の管理・運営・学芸・企画・インフォメーションの提供の中核施設(事務室、アートロビー、レストラン)
工芸館	工芸展示室、販売コーナー、デザイン情報室
染色工房	制作室、加工室
ガラス工房	制作室、加工室
陶工房	制作室、加工室
有島武郎旧邸(復元)	有島武郎の絵・原稿・写真等の展示室・研修室
彫刻アトリエ	制作室、加工室
昭和62年度オープン施設 アートホール	音楽・演劇・舞踊等の多目的利用可能な練習室(大・中・小)、楽器庫
木工房	工作室、機械加工室
絵画アトリエ(3棟)	絵画アトリエ(大・小)、ロジ



規模/約35,000㎡

概要/現代日本を代表する彫刻家の52点の作品とノルウェーのビーゲランの3点の彫刻が常設展示



規模/約100㎡～130㎡

概要/個人あるいはグループの制作・研修施設



規模/約1,600㎡

概要/「芸術の森」の管理・運営・学芸・企画、インフォメーションの提供等の中核施設



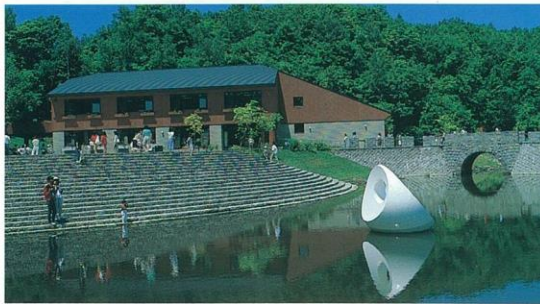
規模/約1,500㎡

概要/オーケストラ等音楽分野の大練習場、演劇やパート練習・小編成の練習可能な施設



規模/約260㎡

概要/有島武郎関係の写真や絵画、原稿等の展示や研修室



規模/約1,000㎡

概要/工芸展示室や販売コーナー、デザイン情報コーナーを備えており、1階の一部と2階は染織工房



規模/約510㎡、約220㎡

概要/ガラス工房、陶工房、木工房、展示場や制作過程を見学できるデモンストレーション工房等の設備を設置

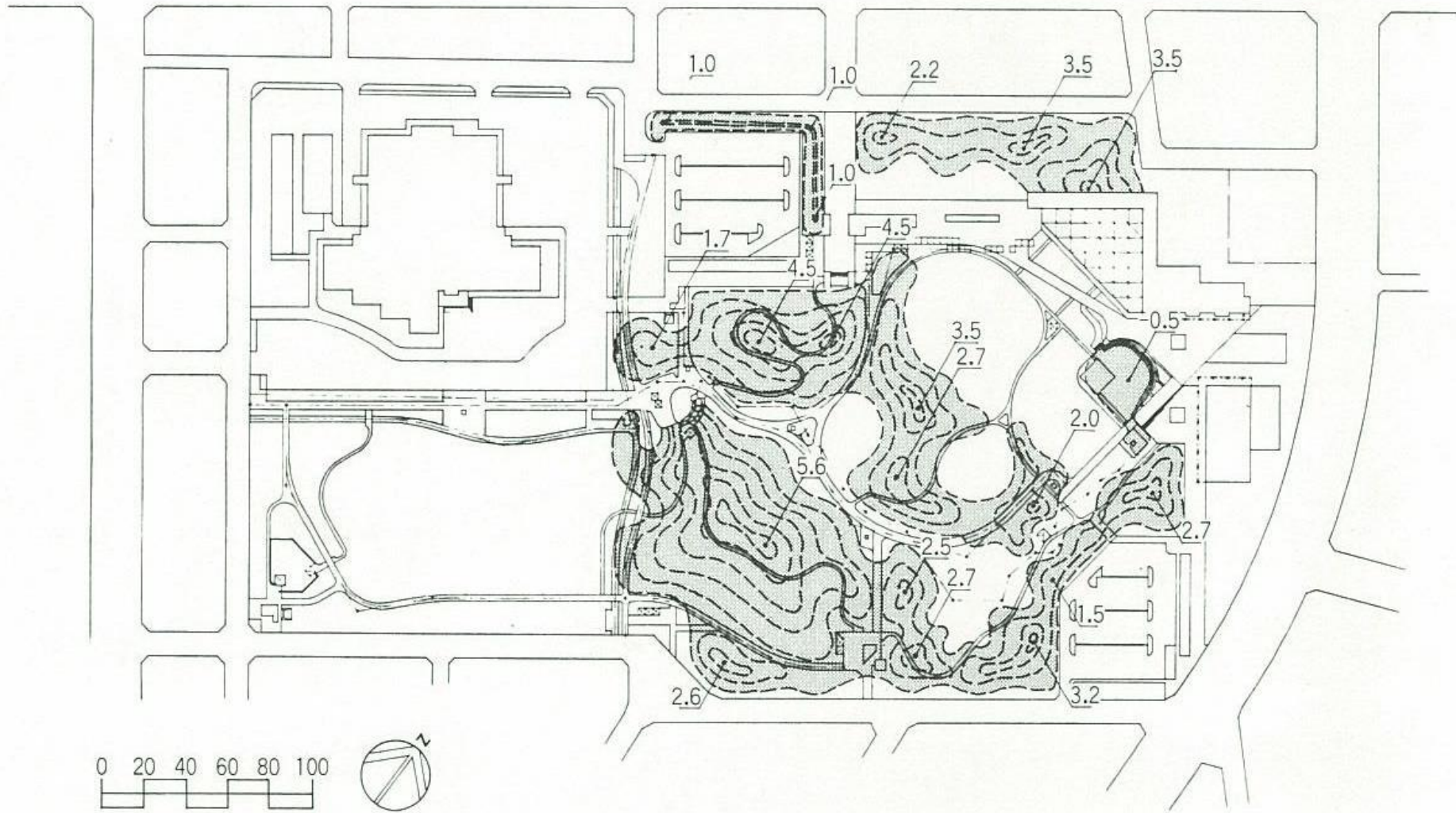
- There are a field sculpture art museum, an art museum, a music hall, a woodwork fringe, a glass cutter fringe, an atelier, etc.

Design of main road is important in a residential area.

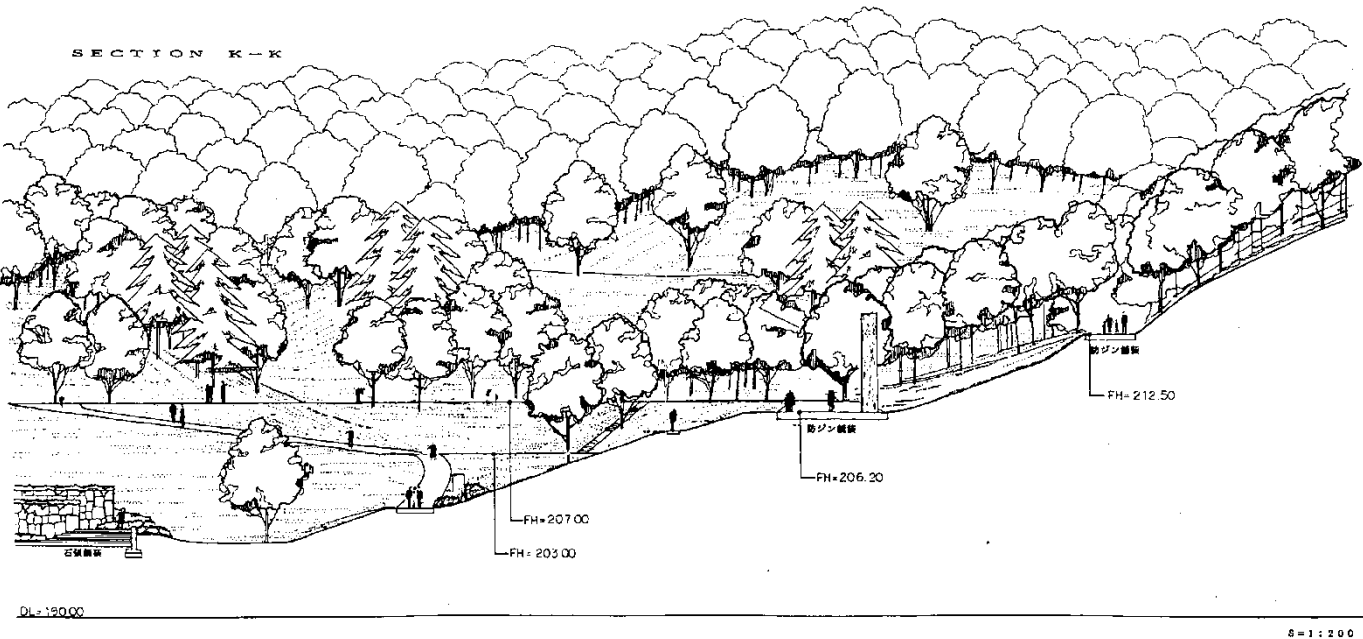


- A flower blooms in spring, there is the shade of a tree in summer, and autumnal leaves are beautiful in autumn.
- There is a bench for residents to rest or talk happily.

We value the design of topography.



- We write the contour line in every 50cm, and design topography. The contour line in every 10cm may examine.



- I would like to adjust topography finally there.
- Topography with an angle of gradient of 5° - 10° is felt quiet.
- If the angle of gradient of 20° is exceeded, it will feel like a cliff.

Square and place is very important space.



- The place which holds that large number of people gather and an event is examined. I would like to also install a monument and a bench.



Lawn is the space which can perform various activities.

We understand the relation between an inclination and activity.



- An inclination suitable for running or playing a game is 10% or less.
- An inclination suitable for sitting down and resting is 10 to 20%. It is an inclination suitable also for the seat of the lawn of a soccer stadium.
- An inclination suitable for children sliding or rolling is 20 to 30%.



- It is a playground for a big child for a while.
- A big launching platform is popular.



- The indoor playground was also built.
- It can play comfortably in winter.

This is the garden of a bulb.
It is a style which is very popular in Hokkaido.
How about challenging the production of such garden?

